

A lightweight and eco-friendly alternative to traditional concrete bases for GREENHOUSES

HOW TO INSTALL



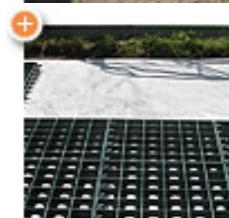
01. Prepare the ground

Clear and prepare a level area of land just larger than the area needed for your building. EcoBase grids can be laid directly on to grass, gravel or bare land.



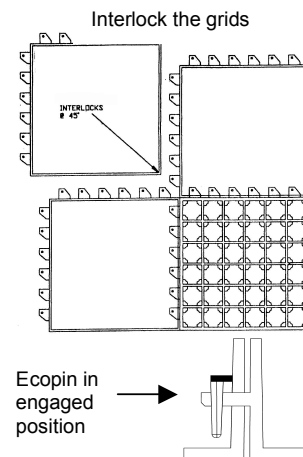
02. Lay out the membrane

Cover the area with a Geotextile permeable membrane. The membrane can be cut or folded to size



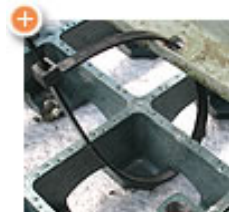
03. Set out & fix the grids

Lay out your grids, making sure the feet are facing down. Interlock the grids and secure using the Ecopins to create your finished base. Use 6 Ecopins per grid spaced in alternate lugs. The pins should be in the engaged position to ensure there is no gap between grids. The grids can be cut to size or trimmed using a hand saw.



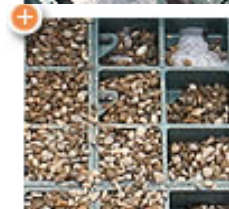
04. Position your greenhouse

Place your greenhouse on top of the EcoBase grids.



05. Secure greenhouse

Use plastic ties to secure the greenhouse to the base to provide extra stability.



06. Fill with pea gravel

Fill the Ecobase grids with pea gravel to provide an instant soak away.

PRODUCT DATA:

Made from UV stabilized 100% recycled plastic.

Each grid is: 500mm x 500mm x 50mm.

Weight: 1.8kg per grid.

Crushability: 185 tonnes m2.

Each grid holds approximately 15kg of 10mm pea gravel